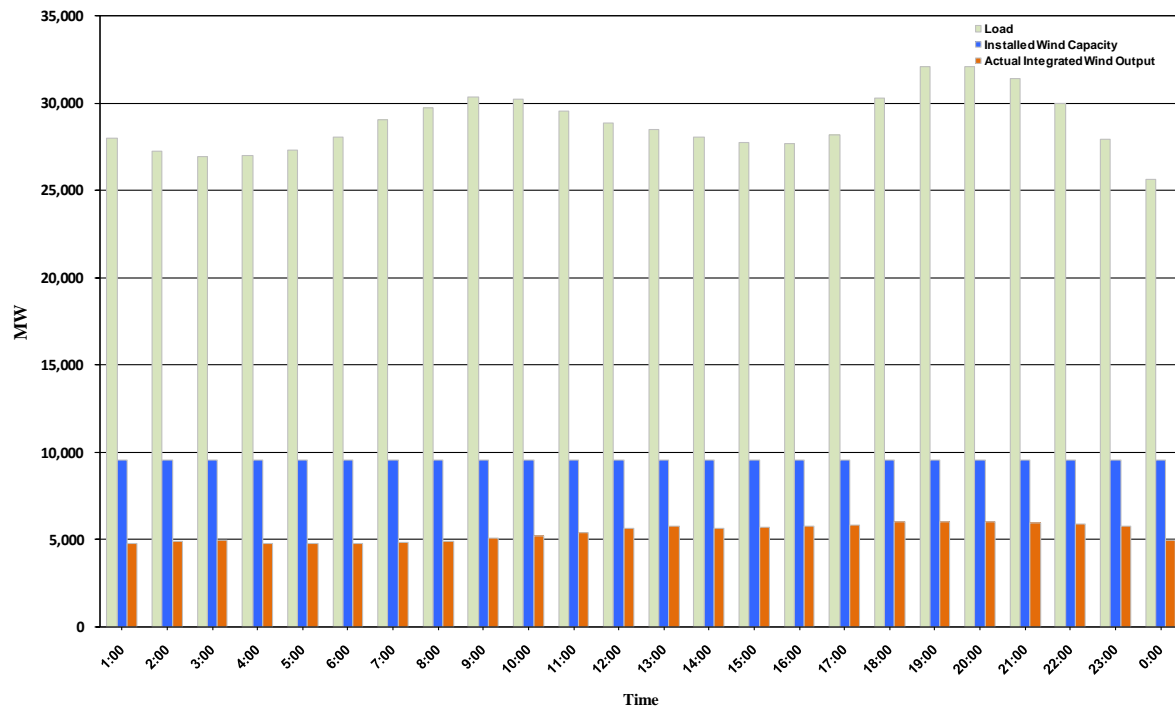




## ERCOT Grid Operations Wind Integration Report: 11/28/10

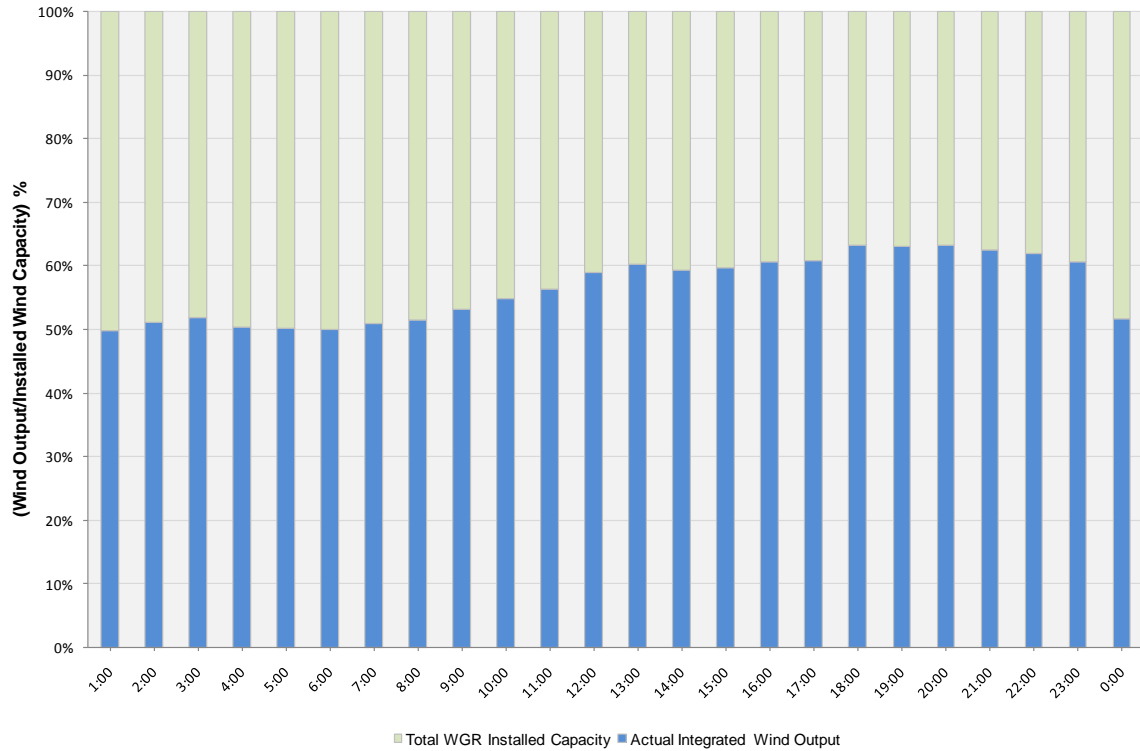
Peak Load	<b>32,090 MW</b>
Load Peak Hour	<b>19</b>
Wind Record 06/12/10	<b>7016 MW</b>
Max Wind value	<b>6260 MW</b>
Wind Peak Hour	<b>20:01:32</b>
Wind Integration %	<b>19.68</b>

Hourly Average Actual Load vs. Actual Wind Output  
11-28-2010

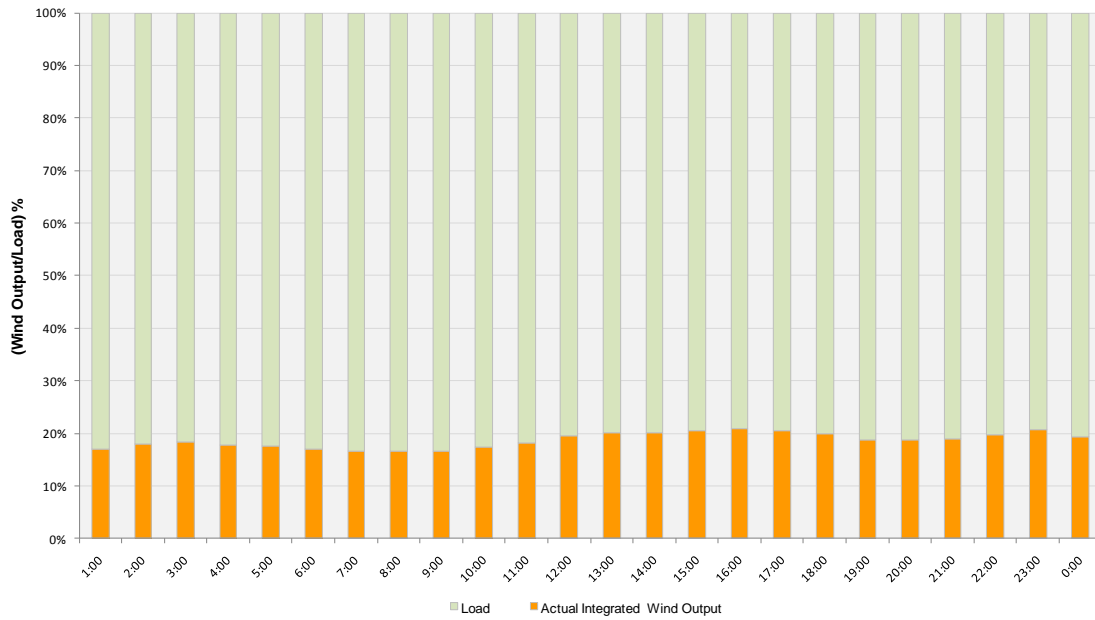




**Actual Wind Output as a Percentage of the Total Installed Wind Capacity**  
**11-28-2010**



**Actual Wind Output as a Percentage of the ERCOT Load**  
**11-28-2010**





ERCOT Load vs. Actual Wind Output 11/21/10 - 11/28/10

